

HEATERS

THE INVERTER 5026 / 5096 HEATER

£335

- 3,200w of power
- ECO mode saves fuel
- Built in thermostat & carbon monoxide alarm
- Heats rooms up to 120m³
- Anti-tip sensor
- Consumption: 0.0083 - 0.3L per hour
- Tank Size: 5L

THE KERO 4600 HEATER

£430

- 4,600w of power
- ECO mode saves fuel
- Built in thermostat & carbon monoxide alarm
- Heats rooms up to 185m³
- Anti-tip sensor
- Tank Size: 7L

THE GLOW WICK 240 HEATER

£199

- 2,400w of power
- Heats rooms up to 15m³
- Tank Size: 3.4L
- Requires no electricity to run
- Batteries required for automatic lighting
- Replacement wicks available

THE GLOW WICK 290 HEATER

£225

- 2,900w of power
- Heats rooms up to 18m³
- Tank Size: 4.4L
- Requires no electricity to run
- Batteries required for automatic lighting
- Replacement wicks available

**YOU CANNOT USE KEROSENE IN ANY OF THE ABOVE HEATERS.
IT WILL CLOG AND BREAK THE HEATER.
IT WILL VOID YOUR WARRANTY.**

CAMPING STOVE

£112



- 2,600w of power
- Works as a cooking stove & it's fully portable
- 4.6L Tank
- Easy to fill
- Fuel gauge display
- Replacement wicks available
- **Not suitable for indoor use**

TOZANE

£55



- C1 Grade paraffin
- Safe for indoor use
- Virtually odourless
- High flashpoint
- Less than 3 parts of sulphur per million
- Safe to use in all our paraffin heaters

THE ROCKET INDUSTRIAL HEATER

£310



- 30kw power / 102,000 BTU/hr
- Fuel Consumption 2.15kg/h
- Air Output: 720³/h
- Fuel Tank: 20L
- Power Input: 220-240V 50Hz
- 87.5cm x 39.5cm x 46.5cm
- **Not suitable for home use**

THE RONAN HEATING

£199



- 1,800w of power
- Remote controlled
- 4 Power modes
- Built-in bluetooth speaker
- Infrared heating
- Waterproof cover included

HEATING ACCESSORIES

REPLACEMENT WICKS	£21.50
ELECTRIC FUEL PUMP	£17.50
MANUAL FUEL PUMP	£4.50
MESH DOME FOR CAMPING STOVE	£17.50
RECHARGEABLE ARC LIGHTER	£4.50
CAMPING KETTLE	£12.99

SHED ESSENTIALS

SHELVING UNITS

£55 Small

£70 Medium

£85 Large



- Easy to assemble
- Supports 100kg (Small, Medium)
- Supports 150kg (Large)
- MDF Shelves
- Adjust shelves to suit your needs
- Rubber stoppers for protection

TOOL HOOKS (SET OF 4)

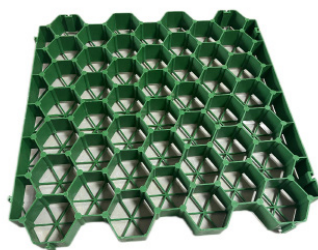
£9



- Easily secured into position
- Easy to install
- Set Of 4

EASY SHED BASE

£22.40



- Set of 4
- Cost effective
- Considerably easier to fit
- **Steel sheds require a shed base, whether it's concrete, tarmac or these easy bases!**

DIY WORKBENCH

£89

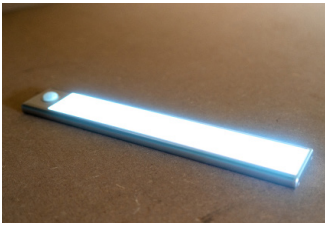


- Three tiered
- Adjustable shelf heights
- Peg-board backing
- Powder coated steel
- Metal frame: 120cm (W) x 60cm (D) x 150cm (H)
- Bottom & Middle Shelf: 60cm (D) x 5cm (H)
- Top Shelf: 30cm (D) x 5cm (H)

ANY QUESTIONS? CALL US ON 0283 044 1560

LED LIGHT

£25.99



- Powerful, rechargeable light
- Built-in motion sensor
- Fully wireless
- Magnetic, sticks to our steel sheds effortlessly
- Also comes with 3M tape for non-metal surfaces
- 23cm (L) x 4cm (W)

WINDOW KITS

£25



- Exterior panel is 43cm x 33cm
- The window itself is 32cm x 24cm
- Built-in vents
- Compatible with our Classic Range sheds
- Polycarbonate window
- Colour options for Green & Off White shed
- **It is recommended to add this at time of purchasing shed**

PADLOCK

£8.99



- Key lockable
- Two sets of keys included
- Robust and strong

COMBINATION LOCK

£12.99



- Ideal for our Modular Bin Store
- 4 digit combination lock
- Durable cable lock

SEE OUR WEBSITE: WWW.DIRECTSTORE24.CO.UK

CARTS, BARROWS & HAND TRUCKS

75L TIPPING CART

£75



- Pivoting front axle (Front Wheel Drive)
- Easy lifting system for easy tipping
- Steel frame
- Versatile pulling handle
- Ideal for a variety of gardening tasks
- Heavy gauge plastic tray
- 94cm (L) x 50cm (W) x 51cm (H)

250L TIPPING CART

£190



- Heavy Duty 250L Tub Capacity
- Compatible with a ride-on lawnmower
- Galvanised steel frame
- Pivoting front axle
- Steel rimmed wheels with all-terrain tyres.
- Overall size 125cm (L) x 82cm (W) x 71cm (H)
- Tub Size -125cm (L) x 82cm (W) X 31cm (D)

350L TIPPING CART

£149



- 350L Tub capacity
- Connects to quads, ATVs & ride on mowers
- Available in black and red
- Easily tipped by lever on the draw bar
- Steel-rimmed wheels
- Overall size - 150cm (L) x 95cm (W) x 74cm (H)
- Tub Size -120cm (L) x 95cm (W) X 31cm (D)
- Ball hitch available

150KG MESH CART

£95



- Removable Panels
- Works as a box-cart or as a flatbed
- Pneumatic Tyres
- Pivoting front axel & moveable pulling handle
- Length: 96cm / 38"
- Width: 51cm / 20"
- Cage Height: 20cm / 7.8"
- Flat-bed height from floor: 30cm / 12"

ANY QUESTIONS? CALL US ON 0283 044 1560

PLASTIC WHEELBARROW 90L

£65



- 90 Litres / 90KG / 14.2 Stone
- Tub Size: 89cm (L) x 67cm (W) x 65cm (H)
- Square bar for easy upright storage
- Heavy-duty yellow plastic tub

STEEL WHEELBARROW 90L

£69



- 90 Litres / 90KG / 14.2 Stone
- Tub Size: 89cm (L) x 59cm (W) x 60cm (H)
- Powder-coated steel tub
- Galvanised frame
- Square tipping bar to facilitate tipping
- Ideal for rubble or sharp materials
- Perfect for sharp, heavy or awkward loads.

PLASTIC WHEELBARROW 100L

£69



- 100 Litres / 100KG / 15.7 Stone
- Tub Size: 91cm (L) x 68cm (W) x 62cm (H)
- Single, pumpable wheel
- Square bar for easy upright storage
- Heavy-duty Green plastic tub

SEE OUR WEBSITE: WWW.DIRECTSTORE24.CO.UK

2 IN 1 HAND TRUCK

£155



- Transforms from a handtruck to a flat-bed
- Solid Wheels
- Weighs 18kg / Supports up to 300kg (as a flatbed)
- Size as handtruck: 27cm (L) 30cm (W) x 130cm (H)
- Size as flat-bed: 110cm (L) x 30cm (W) x 100cm (H)
- Nose Plate: 45.7cm (L) x 27.3cm (W)

3 IN 1 HAND TRUCK

£175



- Sac-truck, flatbed and a 45° loader in one
- Weighs 20kg
- 350kg capacity on 4 wheels (as a flatbed)
- 270kg capacity on 2 wheels
- Widest point (wheel to wheel) 50cm
- Size as Hand Truck: 26cm (L) x 31cm (W) x 97cm (H)
- Size as 45° Sac Truck: 27cm (L) x 31cm (W) x 97cm (H)
- Size as flatbed: 46.5cm (L) x 31cm (W) x 132.5cm (H)
- Noseplate: 46cm x 19cm

INDUSTRIAL YELLOW HAND TRUCK

£95



- Max Capacity: 300kg
- Fixed Footplate: 50cm x 18cm
- Extended Footplate: 27cm x 50cm
- Measurements: 49cm (L) x 30cm (W) x 127cm (H)
- Non puncture wheels

P HANDLE HAND TRUCK

£50



- Max Capacity: 150kg
- Footplate: 35cm x 22cm
- Measurements: 40cm (L) x 54cm (W) x 130cm (H)
- Perfect for warehouses, businesses and more

ALUMINIUM HAND TRUCK

£95



- Max Capacity: 200kg
- Footplate: 35cm x 22cm
- Measurements: 40cm (L) x 54cm (W) x 130cm (H)
- Pneumatic Wheels
- Perfect for warehouses, businesses, and more

ANY QUESTIONS? CALL US ON 0283 044 1560

VEHICLE ACCESSORIES

BIKE STAND

£34.99



- Powder-coated steel
- Suitable for front or back wheel
- Compactable - can be taken apart and folded flat
- Lightweight. It only weighs 1.5kg

BIKE HOOP

£12.99



- Boltable
- Connectable
- Can be mounted vertically

MOTORBIKE CHOCK

£49.99



- Ports for bolting to surfaces
- Tie-ports for securing with tie-down straps
- Built for securing front wheels
- Adjustable wheel-head height
- 60cm x 45cm
- Wheel port length: 29cm

BALL HITCH ATTACHMENT

£27



- Made with durable metal
- The perfect companion to our 350L Tip Cart
- Strong locking mechanism
- Easy to open and secure
- Small enough to keep in any boot
- Suitable for a 50mm Ball Hitch

JERRY CANS

£22 Small

£29 Medium

£34 Large

£6.50 Spout



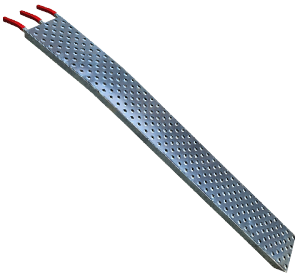
- 3 Sizes; 5L, 10L, 20L
- Fully rustproof
- Anti-blast protection
- CE Approved
- Additional spout available

SEE OUR WEBSITE: WWW.DIRECTSTORE24.CO.UK

RAMPS

SOLID LOADING RAMPS

£128



- Holds up to 400kg as a set
- Contoured for additional structural strength
- Rubber red-tips allow more flexibility for loading
- Deep grooves for traction
- Sturdy back support
- 175cm long
- 22cm wide
- 4cm tall

FOLDABLE LOADING RAMPS

£145



- Holds up to 500kg as a set
- Contoured for additional structural strength
- Rubber red-tips allow more flexibility for loading
- Deep grooves for traction
- Sturdy back support
- Size (Open) 195cm (L) x 22.5cm (W) x 4cm (H)
- Size (Folded) 110cm (L) x 22cm (W) x 11cm (H)

WHEELCHAIR RAMPS

£115 Small

£130 Medium

£160 Large



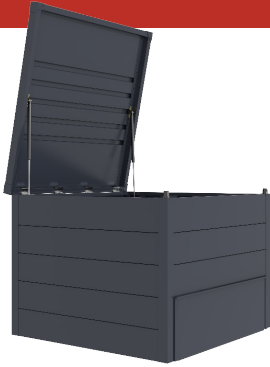
- Foldable
- Supports up to 270kg
- Three sizes available
- Small: 61cm x 72cm (Weighs: 5.2kg)
- Medium: 122cm x 72cm (Weighs: 10.05kg)
- Large: 183cm x 72cm (Weighs: 14.7kg)

ANY QUESTIONS? CALL US ON 0283 044 1560

HOME AND GARDEN

METAL COMPOSTER

£279



- Gas assisted lid opening
- Two piece metal aeration system
- Length 100cm / 3ft 3"
- Width 100cm / 3ft 3"
- Height 83cm / 2ft 9"
- 830L Capacity

PLASTIC GARDEN STORAGE BOX

£165



- 500L Capacity
- 63cm (L) x 128cm (W) x 64cm (H)
- Gas assisted lid opening
- Made from heavy duty plastic

GARDEN STORAGE BOX

£255



- Gas assisted lid opening
- 400L Capacity
- Lid: 132cm (W) x 62cm (D) x 4cm (H)
- Body: 126cm (W) x 56cm (D) x 59cm (H)
- Metal Floor
- Key-lockable handle & 2 keys
- 1.2mm Aluminium frame powder coated frame
- 0.6mm Galvanised steel sheet powder coating

SEE OUR WEBSITE: WWW.DIRECTSTORE24.CO.UK

PICNIC TABLE

£85



- Foldable
- Aluminium chairs and legs
- MDF table top
- 30kg Capacity table top
- 100kg Capacity seats
- Size (Open): 86cm (L) x 67cm (W) 66cm (H)
- Seats: 27cm (L) x 27cm (W) x 40cm (H)

BISTRO FURNITURE SET

£259.99



- 1 Table
- 2 Chairs
- 2 Teal Cushions
- 1 Rain-Cover with ties
- Light grey-cream table and chairs
- Black tinted tempered glass table top
- Chairs can be tucked into the table

PANEL CARRIER

£22



- Rubber gripped panel carrier
- Can accomodate 22mm-thick panels
- Made with aluminium and steel
- Can support 50kg
- Impact-resistant ABS handles

DOG PEN

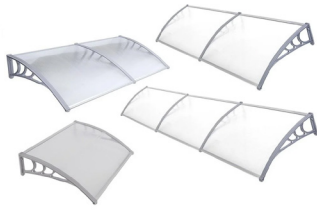
£99



- Perfect for big or small dogs
- Metal frame
- 8 panels (including one 'door' panel)
- Panels are 75cm (W) x 85cm (H)
- Easy to set up

ANY QUESTIONS? CALL US ON 0283 044 1560

DOOR CANOPIES



- Four sizes available
- Made with sturdy polycarbonate
- Easily fixed to suitable surfaces
- Medium: 1.2m x 0.8m, clear or grey
- Large: 1.5m x 0.8m, clear only
- XL: 2m x 1m, clear or grey
- XXL: 3m x 1m, clear only
- Connectable

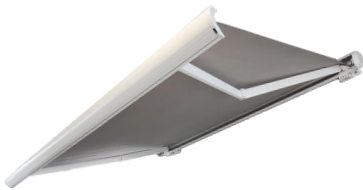
£65 Medium

£75 Large

£78 XL

£105 XXL

MANUAL CASSETTE AWNINGS



- Three sizes available
- Small: 2.5m x 2m
- Medium: 3.5m x 2.5m
- Large: 4m x 3.5m
- Powder coated aluminium frame
- Retractable; manual operation using handle
- Waterproof & UV protection

£480 Small

£699 Medium

£820 Large

**TO SEE OUR FULL RANGE OF PRODUCTS, VISIT
DIRECTSTORE24.CO.UK, OR GET IN TOUCH
WITH ONE OF OUR SALES STAFF TODAY!**



CALL 0283 04415 60

SALES@DIRECTSTORE24.CO.UK

4 GLENANNE ROAD, ARMAGH, BT60 2BX

All prices include VAT. Prices do not include delivery fee.

Speak to a member of staff for details.

Visit Directstore24.co.uk for more information.